

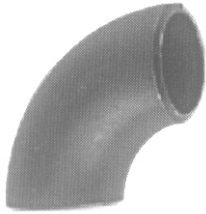
ELBOW

ANSI/STD and XS welding steel elbow

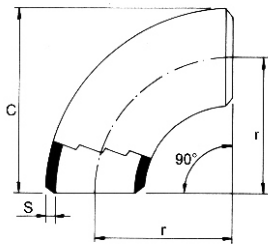
Art. 029.1614 - 90° Standard (STD-Sch.40)

Art. 029.2614 - 90° Extra strong (XS-Sch.80)

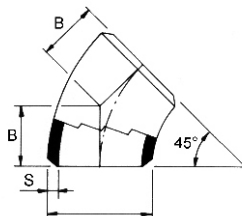
Art. 029.1615 - 45° Standard (STD-Sch.40)



Art. 029.1614



Sec.Art. 029.2614



Art. 029.1615

Execution: LONG RADIUS elbows produced from Gr BASTMA 105 steel seamless pipes - manufacturing, execution and tolerances according to ANSI B 16.9 normatives with WPBASTM A-234 steel - featheredge according to ANSI B 16.25 normatives.

On request: EN 10204/3.1 B-DIN 50049/3.1 B - R.I.N.a and TUV certifications.

Dimensions

Ø	Outside diameter	r mm	B mm	STD		XS	
				S mm	90° Kg	S mm	90° Kg
1/2"	21.3	-	15.9	2.77	0.077	3.73	0.100
3/4"	26.7	-	11.1	2.87	0.077	3.91	0.104
1"	33.4	38.1	22.2	3.38	0.170	4.55	0.250
1 1/4"	42.2	47.6	25.4	3.56	0.250	4.85	0.350
1 1/2"	48.3	76.2	28.6	3.68	0.400	5.08	0.500
2"	60.3	95.2	34.9	3.91	0.700	5.54	0.950
2 1/2"	73.0	114.3	44.4	5.16	1.35	7.01	1.80
3"	88.9	133.4	50.8	5.49	2.20	7.62	2.90
4"	114.3	152.4	63.5	6.02	4.10	8.56	5.50
5"	141.3	190.5	79.4	6.55	6.70	9.52	9.40
6"	168.3	228.6	95.2	7.11	11.0	10.97	16.0
8"	219.1	304.8	127.0	8.18	21.5	12.70	32.0
10"	273	381.0	158.8	9.27	39.5	12.70	51.0
12"	323.9	457.2	190.5	9.52	56.5	12.70	73.5
14"	355.6	533.4	222.2	9.52	72.0	12.70	92.0
16"	406.4	609.6	254.0	9.52	94.5	12.70	122
18"	457.2	685.8	285.8	9.52	119	12.70	157
20"	508.8	762.0	317.5	9.52	147	12.70	194
22"	558.8	838.2	342.9	9.52	178	12.70	236
24"	609.6	914.4	381.0	9.52	212	12.70	282

