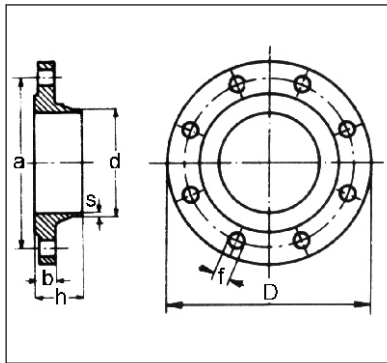


# FLANGES

## WELDING NECK FLANGES NP 160 / NP 250

**Art. 008.6085 NP 160 UNI 6085/67**

**Art. 008.6086 NP 250 UNI 6086/67**



**Execution:** ASTMA105 steel - inside and on welding relief turned - drilled as table - sealing raised surface according to UNI 2229 - butt welding.

**Diameters:** ND 10 ÷ ND 300 (Art. 008.6085 NP160 UNI 6085/67)  
ND 10 ÷ ND 250 (Art. 008.6086 NP250 UNI 6086/67)

**On request:** outside turned.

### Dimensions and weights

ND	FLANGE				DRILLING					Approx. weight Kg.
	Outside diameter D	Inside diam. d DIN ISO	Thickness b	Thickness s	Height h	Holes n°	Diameter f	Center line a		
<b>UNI 6085/67 NP 160</b>										
10	100	14 18	20	2.8	45	4	14	70	1.080	
15	105	21 22	20	2.8	45	4	14	75	1.190	
20	130	26 28	22	3	52	4	18	90	2.030	
25	140	31 34	24	3.7	58	4	18	100	2.670	
32	155	39 43	26	4	62	4	22	110	3.420	
40	170	45 49	28	4.5	64	4	22	125	4.370	
50	195	58 62	30	5	75	4	25	145	6.340	
65	220	77 77	34	6	82	8	25	170	8.820	
80	230	90 90	36	6.8	86	8	25	180	10.020	
100	265	109 116	40	8.5	100	8	30	210	15.100	
125	315	135 141	44	9.3	115	8	33	250	23.700	
150	355	161 170	50	12	128	12	33	290	33.500	
175	390	196 196	54	13.5	138	12	36	320	44.100	
200	430	221 221	60	15.2	140	12	36	360	59.-	
250	515	269 275	68	17	155	12	42	430	93.-	
300	585	326 326	78	21	175	16	42	500	136.-	
<b>UNI 6086/67 NP 250</b>										
10	125	14 18	24	3	58	4	18	85	2.080	
15	130	21 22	26	3.5	60	4	18	90	2.480	
20	135	26 28	26	4	62	4	18	95	2.740	
25	150	31 34	28	4.5	65	4	22	105	3.550	
32	165	39 43	32	5.5	75	4	22	120	5.090	
40	185	45 49	34	6	80	4	25	135	6.660	
50	200	58 62	38	6.8	85	8	25	150	8.180	
65	230	77 77	42	8.5	95	8	25	180	12.700	
80	255	90 90	46	9.3	102	8	30	200	16.500	
100	300	109 116	54	11.5	120	8	33	235	27.200	
125	340	135 141	60	14.7	140	12	33	275	39.500	
150	390	161 170	68	17	160	12	36	320	59.800	
175	430	196 196	74	18.5	170	12	39	355	78.100	
200	485	221 221	82	21	190	12	42	400	112.-	

