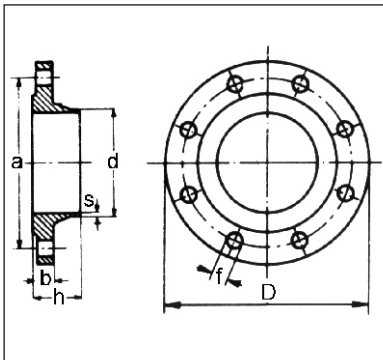


Art. 008.2283



Execution: ASTMA105 steel - inside and on welding relief turned - drilled as table - sealing raised surface according to UNI 2229 - butt welding.

Diameters: ND 10 ÷ ND 1000

On request: outside turned.

Dimensions and weights

ND	FLANGE			DRILLING						Approx. weight Kg.
	Outside diameter D	Inside diam. d DIN ISO	Thickness b	Thickness s	Height h	Holes n°	Diameter f	Center line a		
10	90	14 18	16	2.3	35	4	14	60	0.740	
15	95	21 22	16	2.5	38	4	14	65	0.830	
20	105	26 28	18	2.5	40	4	14	75	1.030	
25	115	31 34	18	2.8	40	4	14	85	1.380	
32	140	39 43	18	3	42	4	18	100	2.010	
40	150	45 49	18	3	45	4	18	110	2.330	
50	165	58 62	20	3.5	48	4	18	125	3.080	
65	185	77 77	22	3.5	52	8	18	145	4.-	
80	200	90 90	24	3.7	58	8	18	160	5.-	
100	235	109 116	24	3.7	65	8	22	190	6.700	
125	270	135 141	26	4	68	8	25	220	9.200	
150	300	161 170	28	5	75	8	25	250	12.-	
175	330	196 196	28	5	75	12	25	280	13.600	
200	360	221 221	30	5	80	12	25	310	16.800	
250	425	269 275	32	5.5	88	12	30	370	23.300	
300	485	326 326	34	6	92	16	30	430	30.500	
350	555	371 358	38	6.4	100	16	33	490	47.600	
400	620	422 409	40	7	110	16	36	550	62.100	
450	670	460 460	40	8	115	20	36	600	68.-	
500	730	511 511	44	8	125	20	36	660	89.-	
600	845	612 612	46	8	125	20	39	770	114.-	
700	960	714 714	46	10	125	24	42	875	138.-	
800	1085	816 816	50	11	135	24	48	990	185.-	
900	1185	917 917	54	12	145	28	48	1090	224.-	
1000	1320	1020 1020	58	13	155	28	56	1210	293.-	