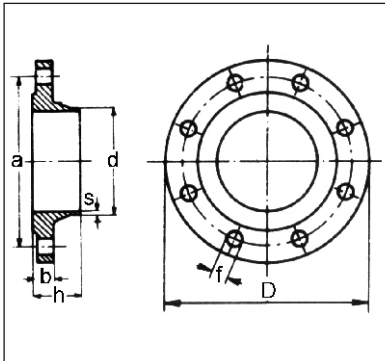


# FLANGES

## WELDING NECK FLANGES NP 40 UNI 2284/67

Art. 008.2284



**Execution:** ASTMA105 steel - inside and on welding relief turned - drilled as table - sealing raised surface according to UNI 2229 - butt welding.

**Diameters:** ND 10 ÷ ND 1000

**On request:** outside turned.

### Dimensions and weights

ND	FLANGE			DRILLING						Approx. weight Kg.
	Outside diameter D	Inside diam. d DIN ISO	Thickness b	Thickness s	Height h	Holes n°	Diameter f	Center line a		
10	90	14 18	16	2.3	35	4	14	60	0.740	
15	95	21 22	16	2.5	38	4	14	65	0.830	
20	105	26 28	18	2.5	40	4	14	75	1.030	
25	115	31 34	18	2.8	40	4	14	85	1.380	
32	140	39 43	18	3	42	4	18	100	2.010	
40	150	45 49	18	3	45	4	18	110	2.330	
50	165	58 62	20	3.5	48	4	18	125	3.080	
65	185	77 77	22	3.5	52	8	18	145	4.-	
80	200	90 90	24	3.7	58	8	18	160	5.-	
100	235	109 116	24	3.7	65	8	22	190	6.700	
125	270	135 141	26	4	68	8	25	220	9.200	
150	300	161 170	28	5	75	8	25	250	12.-	
175	350	196 196	32	5.5	82	12	30	295	18.-	
200	375	221 221	34	5.5	88	12	30	320	20.800	
250	450	269 275	38	6.5	105	12	33	385	33.800	
300	515	326 326	42	7.3	115	16	33	450	47.400	
350	580	371 358	46	8	125	16	36	510	69.-	
400	660	422 409	50	9	135	16	39	585	97.-	
450	685	460 460	50	9	135	20	39	610	112.-	
500	755	511 511	52	10	140	20	42	670	118.-	
600	890	612 612	54	18	145	20	48	795	145.-	
700	995	714 714	58	18	145	24	48	900	190.-	
800	1140	816 816	60	20	145	24	56	1030	260.-	
900	1250	917 917	64	22	150	28	56	1140	335.-	
1000	1360	1020 1020	68	25	155	28	56	1250	440.-	

